

2021-2022 Annual Report



» Improving Health Through Education



CMU MEDICAL EDUCATION

PARTNERS

CENTRAL MICHIGAN UNIVERSITY



Samuel Shaheen, M.D.

From the President and CEO

The Central Michigan University Graduate Medical Education program experienced an exceptional academic year in 2021-22, with our many activities, accomplishments and milestones focused on one key priority: *improving health through education*.

Notable among the year's achievements was the addition of a pediatrics residency program that welcomed its first class of resident physicians on July 1, 2022. To offer additional support to the children in our community, we opened a completely renovated Women and Children's Center in December 2022. This was provided for by the generous lead gifts from the Eddy Foundation and the Wickes Foundation. Additionally, we were pleased to receive federal funding from the Health Resources and Services Administration (HRSA) through the Teaching Health Center Graduate Medical Education Grant to increase the number of residents in internal medicine and psychiatry. This will help alleviate physician shortages while enhancing current programs. We added two new specialties — genetics and rheumatology — and are forging new community partnerships to address some of our region's most urgent health care challenges.

This academic year, more than 8,000 medical students applied for our 40 resident physician positions — a humbling statistic that demonstrates our strong reputation and demand among doctors. These individuals graduated from a variety of medical schools including our own CMU College of Medicine, “close by” Michigan State University College of Human Medicine and, for a few of our matriculants, medical schools around the world.

In 2022, 41 physicians graduated from our residency program in fields ranging from emergency medicine to psychiatry. Of those, 17 remained in our community, evidence that we are meeting our goal to retain physicians who want to serve this Great Lakes Bay Region community. Nine of our graduates pursued additional specialty training — mostly in areas that we do not have here at CMU. We also congratulate Chief Academic Officer Mary Jo Wagner, M.D., D.I.O, for her recent appointment by the Association of American Medical Colleges as a cross-continuum graduate medical education consultant. We are grateful for her expertise, leadership and commitment to learner success.

True to our mission, we are advancing quality of care for our communities while educating individuals to become exceptional physicians and supporting the staffing needs of doctors in our region. The pages of this report describe our impact over the past year.

We thank you for your interest and support and invite you to learn more about our programs as we advance our vision to become nationally recognized for our innovative learner programs; a clinical leader in the region; and vital to our hospital and academic partners, medical staff and patient communities.

A handwritten signature in black ink that reads "Sam". The signature is fluid and cursive.

Samuel Shaheen, M.D.
President and CEO
CMU Medical Education Partners

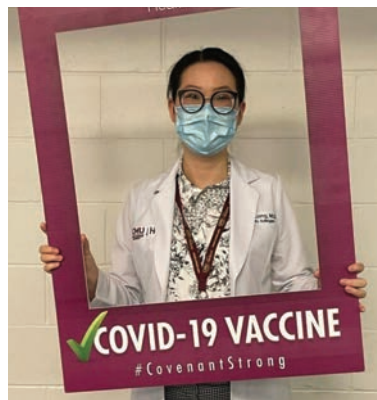


Graduate Medical Education

CMU Medical Education Partners and its three corporate members — Central Michigan University and teaching hospitals, Ascension St. Mary's and Covenant HealthCare — uphold a long-lived tradition of serving patients and learners in the region as a premier academic medical center.

Through collaborative efforts with the CMU College of Medicine, Partners is responsible for eight residencies and two fellowships, which are home to 155 resident learners and 75 faculty physicians. Residents are involved in the community and advance their knowledge and worldviews through two Graduate Medical Education (GME) workshops annually that focus on global curricular topics like gender bias, poverty and diversity.

The primary function of the GME department is to assure accreditation for the residency and fellowship programs. All established programs have received full accreditation, including the new pediatrics residency program on initial accreditation from the Accreditation Council of Graduate Medical Education (ACGME).



» OUR MISSION:

Advance the quality of care for our communities. Educate individuals to become exceptional physicians. Support physician staffing needs of the region.

» OUR VISION:

To become nationally recognized for our innovative learner programs; a clinical leader in the region; and vital to our hospital and academic partners, medical staff and patient communities.



» SPECIALTIES

Emergency Medicine

Family Medicine

Internal Medicine

Academic Hospitalist Services

Endocrinology

Genetics

Infectious Disease

Rheumatology

Obstetrics and Gynecology

Urogynecology

Pediatrics

Pediatric Asthma

Pediatric Endocrinology

Pediatric Rheumatology

Podiatry Medicine and Surgery

Psychiatry/Behavioral Medicine

Child and Adolescent Psychiatry

Forensic Psychiatry

Psychological Therapy Services

Surgery

Colon and Rectal Surgery

Endocrine Surgery

Hepatobiliary Surgery

Trauma and Critical Care



Specialized Care for More Patients

Family Medicine

The Department of Family Medicine expanded its reach in several different ways this year by developing two subspecialty clinics (Musculoskeletal Clinic and Mental Health Clinic) and three new “tracks” and formalizing home visits. The three new department tracks are Sports Medicine, Faculty Development and Hospitalist Medicine. Mohammed Aamir Saiyed, M.D., a PGY-2 Family Medicine resident physician, helped develop the Sports Medicine track and received national recognition for the best project at the Family Medicine Leads Emerging Leader Institute. Delicia Pruitt, M.D., Associate Professor of Family Medicine, was awarded the 2022 Governor’s Service award for her leadership as the Medical Director of the Saginaw County Health Department’s fight against COVID-19.

First Class of Pediatric Residents Guide the Future of the Program

Pediatrics

In July of 2022, four interns formed the inaugural Pediatric Residency class. This diverse group of residents is establishing the foundation of the residency program through collaboration with community pediatricians and specialists, Covenant HealthCare and the Children’s Hospital of Michigan in Detroit. The Women and Children’s Center (to be completed in 2023) will be the home for these programs.

CMU Hosts Dr. Leon L. Haley, Jr. *Bridge to the Future of Emergency Medicine Academy Inaugural Class*

Emergency Medicine

In honor of Leon L. Haley, Jr., M.D., M.H.S.A, C.P.E.E, F.A.C.E.P., an inspiring member of the American Board of Emergency Medicine (ABEM) who passed away in 2021, ABEM hosted 10 second-year medical students in East Lansing, Michigan, for a two-week intensive educational and hands-on experience. CMU was selected as one of only two residencies in the nation (from over 270 programs) to be involved in the academy because of the University’s outstanding medical simulation labs and training scenarios.

A Sought-After Leader in First Metatarsal and Ankle Joint Replacements

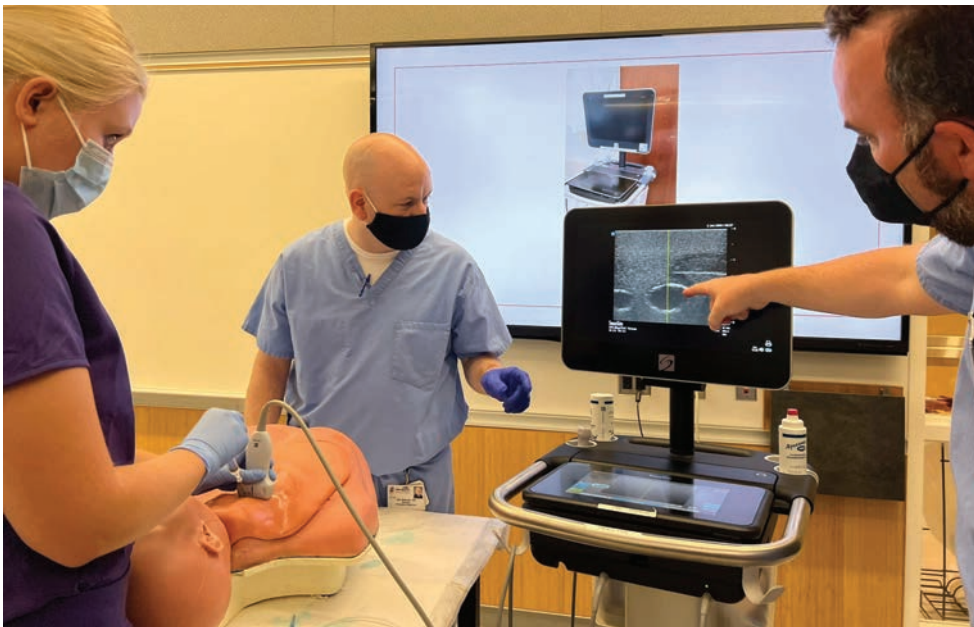
Podiatry

Under the leadership of Program Director Dr. Andrew Cohen, the number of total joint replacement surgeries for the first metatarsal and ankle grows. Covenant HealthCare and Ascension St. Mary's Hospital are the only facilities in mid-Michigan that perform these specialized surgeries, making this an excellent clinical program for our region's patients and an exceptional learning environment for the residents.

Suicide Prevention Collaboration with State of Michigan

Psychiatry

In 2020, there were 1,389 deaths by suicide in Michigan – an issue that our psychiatry faculty and residents, in collaboration with the State of Michigan and regional and local organizations, are actively trying to address by developing training models and resources. One of these is a collaborative project with the Michigan Department of Health and Human Services to create a replicable telehealth suicide prevention training model for service providers and practitioners in isolated and rural communities. The faculty and residents are staunch advocates and educators, participating in local suicide awareness and mental health events. Faculty members Dr. Michael Opperman and Dr. Asif Khan are developing and implementing a new program, TMS (Transcranial Magnetic Stimulation), for medication-resistant depression, and Dr. Kai Anderson started a forensic psychiatry clinic and consultation service — the first of its kind in Saginaw County.





OUR PARTNER HOSPITALS

CMU Medical Education Partners is leading academic medicine in the region in collaboration with CMU College of Medicine and our partner teaching hospitals, Ascension St. Mary's and Covenant HealthCare.

Our physicians and residents provide inpatient care at both local hospitals, allowing our physician faculty to treat diverse patient populations alongside the next generation of resident physicians.



Enriched Didactics Improve Resident Experience

Internal Medicine

This year, the Internal Medicine program welcomed its largest class with a total of 12 residents. The residents got to experience an enriched didactics curriculum with faculty-driven presentations, board review series and three one-hour sessions that covered continuous glucose monitoring and new diabetic agents. New faculty joined the program this year: Dr. Xia Wang (board-certified geneticist), Dr. Jonathon Rene (board-certified rheumatologist) and Dr. Michael Wolohan (board-certified orthopedic surgeon).

CenteringPregnancy® Program Resumes with Renewed Interest

Obstetrics and Gynecology

From in-office Endosee® hysteroscopy to endometrial biopsy to gynecological ultrasound, obstetrics and gynecology residents experience a wide range of procedures. They are taught by a full complement of faculty from varying training backgrounds. This year, faculty were excited to resume the CenteringPregnancy® program after a hiatus during the COVID-19 pandemic. The program brings 8-12 women who are pregnant and due around the same time together for routine prenatal care. Each of the 10 visits is 90 minutes, giving the women 10 times as much time with their provider team and time to build a support network with women going through similar experiences. Patients also have access to a CenteringPregnancy® "store" of helpful and mother-friendly donated items. The Department will also be anchored in the Women and Children's Center located on the Covenant HealthCare campus.

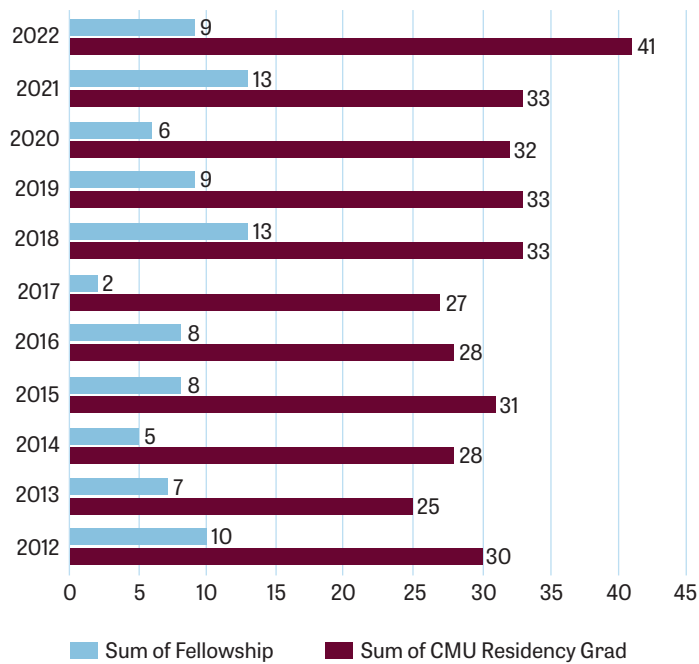
Department Expands Curriculum and Scholarships

Surgery

The Department of Surgery strives for academic and clinical excellence while building an innovative curriculum for residents and students. The faculty and residents have been productive with several presentations at national conferences. Recruitment of both CMU College of Medicine and medical students from other universities have rotated within the department, and scholarships for underrepresented minorities in medicine were made available. The curriculum expanded to address residents as teachers and to offer leadership training. This training will develop our senior residents to deliver high quality experiences to all our learners. Our first program graduate, Dr. Ghaith Al-Qudah, who graduated in June 2022, entered surgical practice, and has passed both his certifying and qualifying examinations for the American Board of Surgery. We are proud of our progress over the past academic year and look forward to the future.



POSTGRADUATE FELLOWSHIP TRAINING



	EMERGENCY MEDICINE	FAMILY MEDICINE	GENERAL SURGERY	INTERNAL MEDICINE	OBSTETRICS & GYNECOLOGY	PEDIATRICS	PODIATRY MEDICINE AND SURGERY	PSYCHIATRY	FELLOWS	TOTAL
2022 RESIDENCY GRADUATES	9	6	1	8	4	-	2	7	4	41
2022/2023 RESIDENTS IN TRAINING	29	24	19	33	15	4	6	25	-	155

» 2022 RESIDENT GRADUATES

9

Accepted into Fellowship Programs

32

Accepted Full-Time Positions

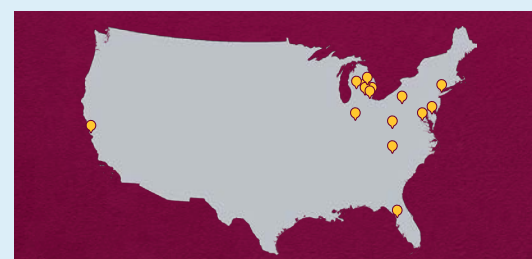
19

Staying in Michigan

17 (41%)

Staying in the Great Lakes Bay Region

GEOGRAPHIC DISTRIBUTION OF NEWLY JOINED FACULTY

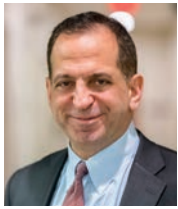


2022 ENDOWMENT REPORT

Fiscal Year 2022 Activity	Saginaw Medical Education Enrichment Award	Lisa Lapham Memorial Fund in Behavioral Health
Beginning Market Value as of 7/1/21	\$1,610,862.25	\$38,246.95
FY 2022 Additions to Principal, Transfers in and Annual Campaign Funds*	\$118,650.00	\$11,475.00
FY 2022 Investment Return	-\$89,849.34	-\$3,196.70
FY 2022 Income Distribution	-\$59,658.14	\$0.00
FY 2022 Net Additions to Endowment	-\$30,857.48	\$8,278.30
Ending Market Value as of 6/30/22	\$1,580,004.77	\$46,525.25

*Does not reflect additions made directly to the spendable account.

Program Leadership



Samuel Shaheen, M.D.
President and CEO



Mary Storm
Chief Operating Officer
and General Counsel



**Mary Jo Wagner,
M.D., D.I.O**
Chief Academic Officer



Ryan Marlette
Chief Financial Officer



Ghassan Hamadeh, M.D.
Medicine
Discipline Chair



Kimberly Dada
Director of Operations



Lisa Killey
Director of
Human Resources



J.D. McBrayer
Director of Finance



Robert Sasso, M.D.
Director of
Simulation Center



Cindy Collins
Director of
Revenue Cycle



**Bethany Figg
DEd.T, M.B.A.**
Director of Graduate
Medical Education

» BOARD OF DIRECTORS

George E. Kikano, M.D.
Chairman of the Board
Vice President for Health Affairs
Dean, College of Medicine
Central Michigan University

Robert O. Davies, Ph.D.
President
Central Michigan University

Beth Charlton
President and Chief Executive Officer
Covenant HealthCare

Michael Sullivan, M.D.
Vice President
Performance Improvement and
Chief Medical Officer
Covenant HealthCare

Stephanie Duggan, M.D.
Regional President
Ascension Northern Ministries,
Ascension St. Mary's, Ascension
Standish, and Ascension St. Joseph

Douglas Apple, M.D.
Chief Medical Officer
Ascension Michigan

Brenda Coughlin, M.D.
Chief Executive Officer
Great Lakes Bay Health Centers

JoAnn Crary
President
Saginaw Future

J. Don Sheets
Chief Financial Officer
(retired)
Dow Corning

Michael Webster
Chairman
Saginaw County
Board of Commissioners

Support a CMU Fund

Advance graduate medical education initiatives and provide professional development for learners, faculty and staff. Donate today.

THE LISA LAPHAM MEMORIAL FUND IN BEHAVIORAL HEALTH

Supports the CMU College of Medicine
Psychiatry Residency Program.

Donate at <https://bit.ly/CMU-Lapham-fund>



SAGINAW MEDICAL EDUCATION ENRICHMENT AWARD

Supports the resident, faculty, and staff
initiatives and overall progression and
growth of CMU Medical Education Partner's
Learner Programs.

Donate at <https://bit.ly/CMU-MedEdu-Fund>



CMU MEDICAL EDUCATION
PARTNERS

CENTRAL MICHIGAN UNIVERSITY

bit.ly/CMU-MEP